

3 YEARS
WARRANTY
PARTS & LABOR

SPIKA NG 215

115 V / 60 Hz

SELF-CONTAINED ICE CUBE MACHINE

FEATURES

- ▶ PRODUCES FULL DICE ICE CUBES OR HALF DICE ICE CUBES
- ▶ STIF: STRONG INOX FRAME. SOLID MACHINE STRUCTURE IN 4 COLUMNS WITH AISI 304 STAINLESS STEEL FRAME
- ▶ STRONGEST DOOR IN THE MARKET. MADE OF STAINLESS STEEL. OPENING AND DAMPING SYSTEM PATENTED BY ITV
- ▶ FRONT VENTILATION CONCEPT: FRONTAL IN-OUT AIR SYSTEM ALLOWS 'BUILT IN' MACHINES
- ▶ CLEANING SWITCH: ALLOWS CIRCULATION OF WATER WITH DESCALING PRODUCT (CALKIN OR SIMILAR) WITHOUT COOLING
- ▶ "NEVER STOP" MOTOR PUMP DEVELOPED BY ITV. PUMP WITHOUT SEALS, WHICH AVOIDS DETERIORATION IN HARD WATER
- ▶ EASI: EASY ACCESS FOR SERVICE & INSTALLATION. ALL PANELS CAN BE DISASSEMBLED SEPARATELY
- ▶ ON/OFF LIGHTED ROCKER SWITCH IN FRONT PANEL
- ▶ TROPICALIZED MACHINES (T CLASS) / STAINLESS STEEL ADJUSTABLE LEGS

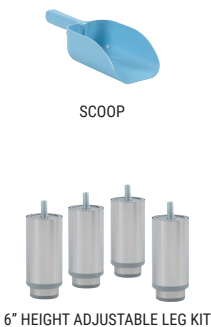


| | 24 H | 70°F/21°C | 50°F/10°C | 90°F/32°C | 70°F/21°C | lbs (Kg) | in (mm) | in (mm) | SPIKA HALF DICE 0,9" (W) x 0,4" (D) x 1" (H) 23 mm (W) x 11 mm (D) x 26 mm (H) Average dimensions | SPIKA FULL DICE 1" (W) x 0,9" (D) x 1" (H) 26 mm (W) x 23 mm (D) x 26 mm (H) Average dimensions |
|----------------|------|------------------|-----------------|----------------|---------------------------|----------------------------|----------------|---------------------------|---|---|
| SPIKA NG 215 A | | 226 (103) | 185 (84) | 77 (35) | Width 23.63" (600) | Width 29.33" (745) | | Depth 27.56" (700) | Depth 30.32" (770) | |
| SPIKA NG 215 W | | 226 (103) | 185 (84) | | Height* 33" (838) | Height 38.19" (970) | | | | |

* WITH LEGS 37"/39"

ACCESSORIES

INCLUDED

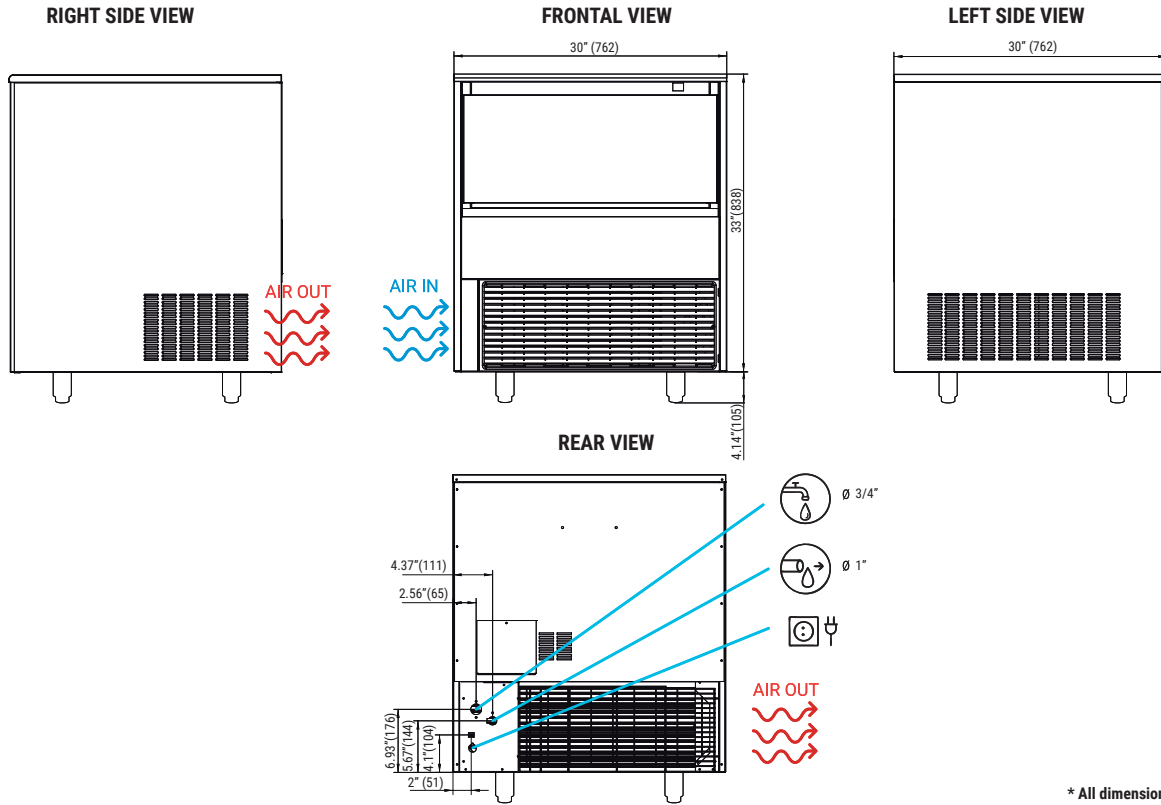


NOT INCLUDED (OPTIONAL)



TECHNICAL SCHEME

SPIKA NG 215



* All dimensions in inches (and mm)

OPERATING CONDITIONS

PRODUCTION (LBS) 60Hz

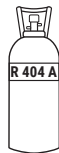
±10% V

41°F/109°F

41°F/95°F

14,5 psi (1 bar) / 87 psi (6 bar)

120/240 Ice cubes/cycle



| | | |
|-----|----|----|
| V | Hz | ph |
| 115 | 60 | 1N |



FULL DICE
SPIKA NG 215 AIR COOLED

| °F | 50° | 60° | 70° | 86° |
|------|-----|-----|-----|-----|
| °C | 10° | 15° | 21° | 30° |
| 50° | 233 | 221 | 204 | 183 |
| 10° | | | | |
| 68° | 226 | 214 | 197 | 176 |
| 21° | | | | |
| 90° | 215 | 203 | 185 | 164 |
| 32° | | | | |
| 109° | 202 | 191 | 172 | 149 |
| 43° | | | | |



FULL DICE
SPIKA NG 215 WATER COOLED

| °F | 50° | 60° | 70° | 86° |
|------|-----|-----|-----|-----|
| °C | 10° | 15° | 21° | 30° |
| 50° | 233 | 221 | 204 | 183 |
| 10° | | | | |
| 68° | 226 | 214 | 197 | 176 |
| 21° | | | | |
| 90° | 215 | 203 | 185 | 164 |
| 32° | | | | |
| 109° | 202 | 191 | 172 | 149 |
| 43° | | | | |

MODELS

SPIKA NG 215 A

SPIKA NG 215 W

| | ASHRAE CONDITIONS (BTu/h) (W) | (W) 109°F | (AWG/mm ²) (n.) | FUSE | 100lbs 90°F / 70°F (Kwh/100 lbs) | gal 100lbs (l/h) | HEAT REJECTED (BTu/h) (W) | (lbs) | (lbs) |
|----------------|----------------------------------|-----------|-----------------------------|------|--|---------------------|------------------------------|-------------|---------|
| SPIKA NG 215 A | 5,405 1,584 | 640 | 14/1,5 | 3 | 15 | 7,21 | 19,5 16,4 | 4,333 1,270 | 157 179 |
| SPIKA NG 215 W | 5,405 1,584 | 640 | 14/1,5 | 3 | 15 | 5,26 | 114,5 61,8 | 4,333 1,270 | 157 179 |



ITV Ice Makers, Inc.
9550 Satellite Blvd, Suite 100
Orlando, FL 32837
Phone: 1 407 826 1860 | Fax: 1 407 826 1861
Toll Free: 1 888 488 1423
sales@itvice.com | www.itvice.com



SERVICE
service@itvice.com
Skype: service@itvice.com
PHONE: +1 888 488 1423
FROM 8AM TO 5PM EST



2 ADDITIONAL YEARS
ON COMPRESSOR &
EVAPORATOR
Read our warranty policy to
know more about
limitations and exclusions

