

# MILLENNIUM & ICE SERIES

## UNIT BENEFITS & OPTIONS

PROJECT \_\_\_\_\_

ITEM # \_\_\_\_\_

### MILLENNIUM SERIES GLYCOL SYSTEMS :

- REFRIGERATION RECIRCULATION SYSTEM USED FOR CHILLING BEER LINES
- CAPABLE OF REMOVING UP TO 8° OF HEAT FROM BEER LINES
- SEALED GLYCOL CIRCULATION RESERVOIR THAT ASSURES NO GLYCOL DISSIPATION
- INTEGRATED SAFETY FEATURES THAT PROTECT MAJOR COMPONENTS FOR RELIABILITY & LONG SERVICE LIFE
- ADJUSTABLE DIGITAL THERMOSTAT FOR CONTROLLING DISPENSING TEMPERATURE
- ALL SYSTEMS USE PHARMACEUTICAL GRADE PROPYLENE GLYCOL FOR SAFETY
- FILL VALVES MAKE LOADING GLYCOL SIMPLE ~ NO FUNNELING OR SPILLAGE
- 6' CORD WITH PLUG ~ SEE CHART FOR NEMA PLUG TYPE
- 304 STAINLESS STEEL ENCLOSURE
- CONTACT OFFICE FOR PROPER SIZING & APPLICATIONS OF SYSTEMS

#### **- OPTIONS -** WINTER CONTROLS

- AVAILABLE FOR LOW AMBIENT EXTERIOR APPLICATIONS. A DOG HOUSE FURNISHED BY OTHERS IS REQUIRED TO PROTECT EXTERIOR UNITS FROM PRECIPITATION.

#### WATER COOLED CONDENSERS

- FOR USE WITH WATER RECIRCULATION SYSTEMS. UNITS COME WITH 3/8" INLET & OUTLET PORTS WITH COMPRESSION FITTINGS. SUPPLY & RETURN LINES SHOULD HAVE BALL VALVES FOR SERVICEABILITY. MINIMUM FLOW RATE OF 1 GALLON PER MINUTE AT 70°. MAXIMUM WATER PRESSURE = 100 PSI / 18 PSI PRESSURE DROP THROUGH EACH CHILLER

#### **- SPECIAL MODELS -** MLN-75 HIGH AMBIENT

- FOR OUTDOOR APPLICATIONS INCLUDING HIGH / LOW AMBIENTS. WINTER CONTROLS ARE STANDARD. AMBIENT TEMPERATURE OPERATING RANGE IS 30° F TO 110° F.

#### MLN-75 BOOSTER

- IMPLEMENTED AS NEEDED FOR ADDITIONAL COOLING CAPACITY

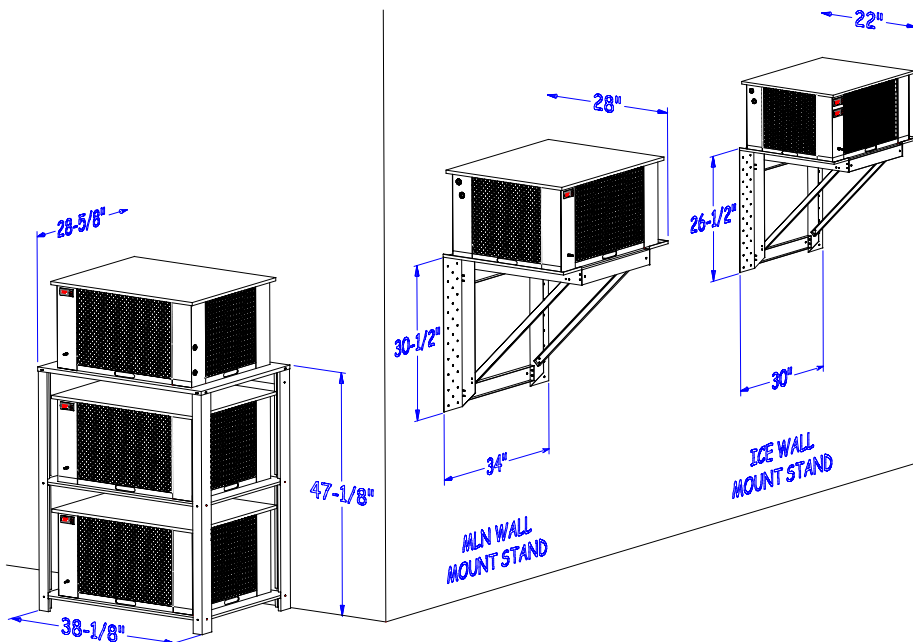
### ICE SERIES REFRIGERATION SYSTEMS :

- CONDENSING UNITS USED FOR SAV DOME LIQUOR DISPENSING SYSTEMS, FROST RAILS & ICE CAVES
- MAY BE LOCATED ANYWHERE CONVENIENT TO PLACEMENT OF SAV DOME, FROST RAIL & ICE CAVES SYSTEMS

### REQUIREMENTS & DISCLAIMERS :

- ALL UNITS WITH THE EXCEPTION OF THE MLN-75 HIGH AMBIENT MODEL REQUIRE OPERATING TEMPERATURES FROM 65° F TO 95° F TO FUNCTION PROPERLY.
- IF UNIT WILL BE OPERATING OUTSIDE IN BELOW 60° F AMBIENTS, WINTER CONTROLS ARE NEEDED
- PROPER VENTILATION IS REQUIRED FOR MAXIMUM EFFICIENCY
- ALLOW 12" AROUND ENTIRE UNIT FOR PROPER AIRFLOW & PERFORMANCE
- ADDITIONAL SPACE ABOVE & IN FRONT OF UNIT SHOULD BE ALLOCATED FOR SERVICEABILITY
- MILLENNIUM CHILLERS SHOULD SET WITHIN 20'-30' OF KEG COOLER

### WALL & FLOOR MOUNT STANDS :



#### KEY POINTS :

- MUST BE SPECIFIED
- STANDS SHOULD SET WITHIN 20'-30' OF KEG COOLER
- ALL UNITS TO BE LOCATED OUTSIDE OF KEG COOLER
- UNITS ARE NOT TO BE LOCATED IN ATTICS, CLOSETS, HIGH HEAT, POORLY VENTILATED AREAS OR INSIDE KEG COOLERS

2371 GAUSE BLVD. WEST  
SLIDELL, LA 70460  
P.O. BOX 5566 - ZIP 70469



www.CHILLRITE32.com  
800.256.2190 - TOLL FREE  
985.641.0183 - FAX

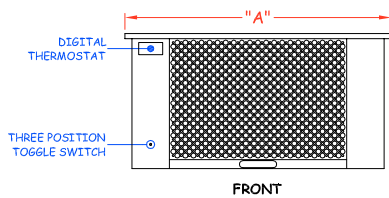
# MILLENNIUM & ICE SERIES

## UNIT SIZES & SPECIFICATIONS

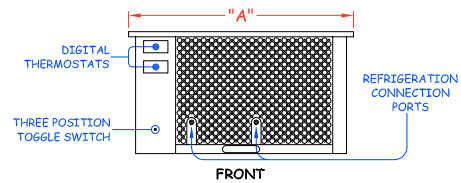
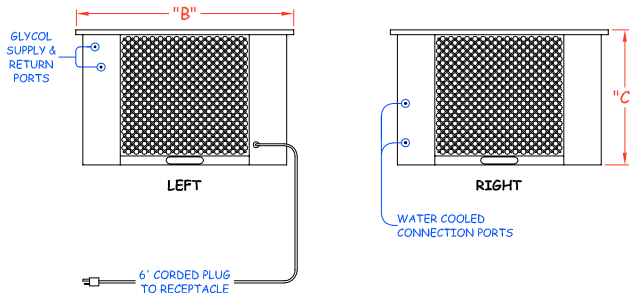
PROJECT \_\_\_\_\_

ITEM # \_\_\_\_\_

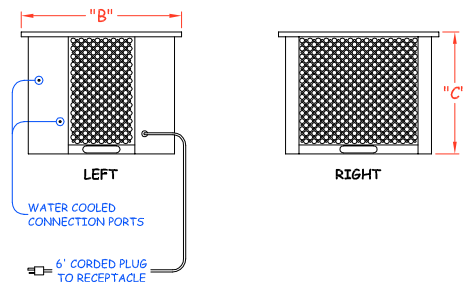
|                           |                | MILLENNIUM SERIES   |          |          |                        |                   | ICE SERIES |          |         |
|---------------------------|----------------|---|----------|----------|------------------------|-------------------|------------|----------|---------|
| MODEL                     |                | MLN-33  | MLN-50   | MLN-75   | MLN-75<br>HIGH AMBIENT | MLN-75<br>BOOSTER | ICE-33     | ICE-75   | ICE-200 |
| COMPRESSOR SIZE           |                | 1/3 H.P.  | 1/2 H.P. | 3/4 H.P. |                        |                   | 1/3 H.P.   | 3/4 H.P. | 2 H.P.  |
| BTU RATING                |                | 3,400   | 4,400    | 6,100    | 6,500                  | 6,100             | 2,400      | 4,700    | 9,300   |
| MAX HEAT REJECTION        |                | 5,100   | 6,600    | 9,150    | 9,750                  | 9,150             | 3,600      | 7,050    | 13,950  |
| WATER USAGE               |                | FOR WATER COOLED<br>CONDENSERS ONLY<br>MINIMUM FLOW RATE OF ONE GALLON PER MINUTE REQUIRED<br>SEE UNIT BENEFITS & OPTIONS PAGE FOR ADDITIONAL INFORMATION |          |          |                        |                   |            |          |         |
| REFRIGERANT TYPE          |                | R-404A  |          |          |                        |                   | R-404A     |          |         |
| REFRIGERANT CHARGE        |                | 19 oz   | 24 oz    | 30 oz    | 43 oz                  | 30 oz             | 28 oz      | 42 oz    | 56 oz   |
| GLYCOL CIRCULATING PUMP   |                | 100 GPH POSITIVE DISPLACEMENT   |          |          |                        | N/A               | N/A        |          |         |
| GLYCOL RESERVOIR          |                | 2 GALLONS   |          |          |                        | N/A               | N/A        |          |         |
| ELECTRICAL<br>INFORMATION | VOLTAGE        | 120V  |          | 208/230V |                        |                   | 120V       | 208/230V |         |
|                           | FREQUENCY      | 60 Hz   |          |          |                        |                   | 60 Hz      |          |         |
|                           | PHASE          | 1Ø  |          |          |                        |                   | 1Ø         |          |         |
|                           | FULL LOAD AMPS | 12  | 15       | 8        | 9                      | 7                 | 8          |          | 12.6    |
|                           | BREAKER SIZE   | 20AMP   |          |          |                        |                   | 20AMP      |          |         |
|                           | NEMA PLUG TYPE | 5-20P   |          | 6-20P    |                        |                   | 5-20P      | 6-20P    |         |
| EXTERIOR<br>DIMENSIONS    | LENGTH - "A"   | 33"   |          |          |                        | 22"               | 28"        |          | 33"     |
|                           | WIDTH - "B"    | 27"   |          |          |                        | 20"               | 20"        |          | 27"     |
|                           | HEIGHT - "C"   | 17"   |          |          | 27"                    | 18-3/4"           | 15-1/4"    |          | 27"     |
| SHIPPING WEIGHT - LBS     |                | 140   | 150      | 160      | 175                    | 100               | 70         | 80       | 140     |



MILLENNIUM SERIES



ICE SERIES



2371 GAUSE BLVD. WEST  
SLIDELL, LA 70460  
P.O. BOX 5566 - ZIP 70469



www.CHILLRITE32.com  
800.256.2190 - TOLL FREE  
985.641.0183 - FAX